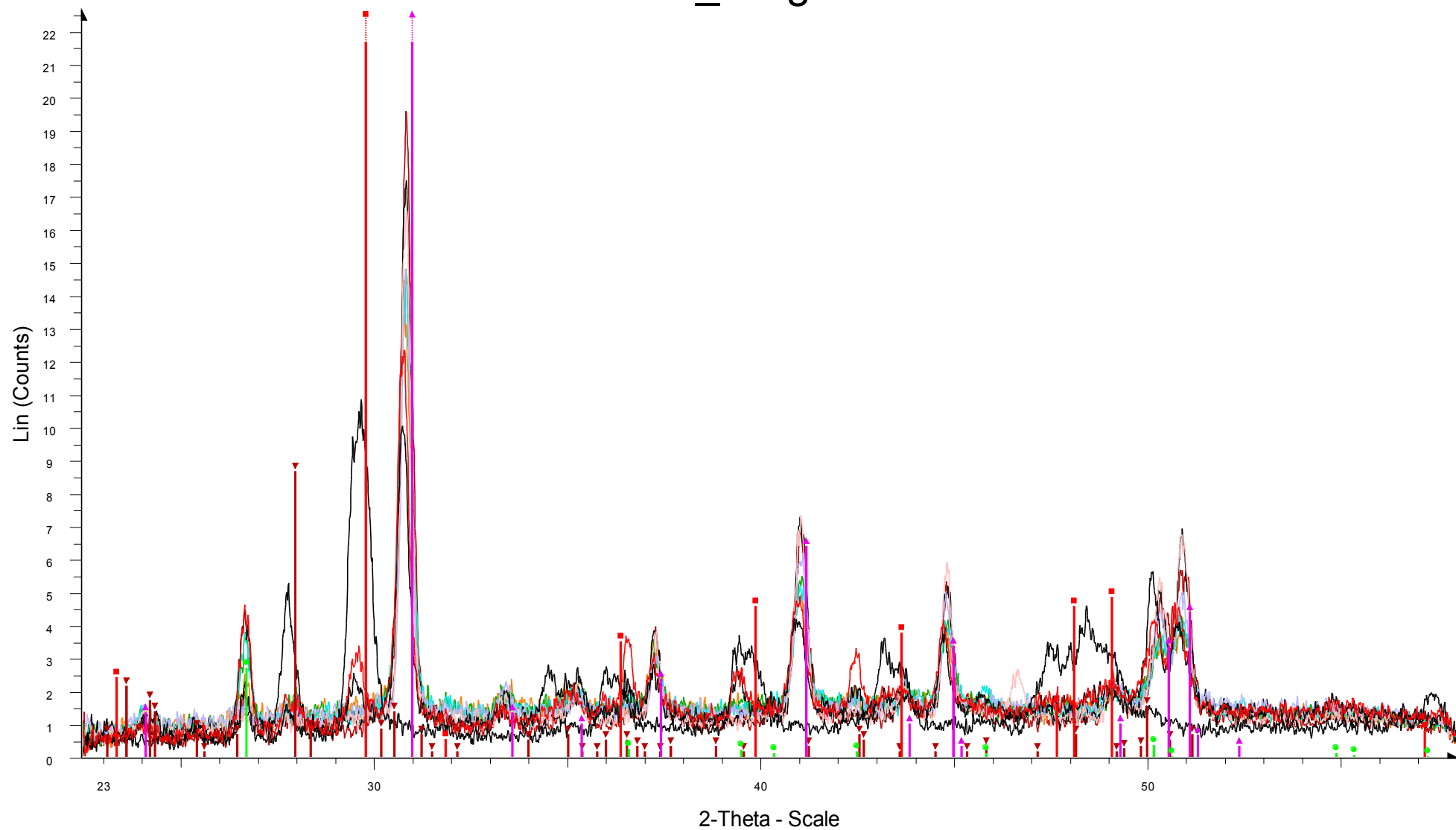


# Calcite\_Aragonite



- |   |  |   |
|---|--|---|
| <p>Calcite_Aragonite - File: 3AB1.raw - Type: 2Th alone - Start: 22.410 ° - Operations: Import</p> <p>Calcite_Aragonite - File: 3AB2.raw - Type: 2Th alone - Start: 22.410 ° - Operations: Import</p> <p>Calcite_Aragonite - File: 3AB3.raw - Type: 2Th alone - Start: 22.410 ° - Operations: Import</p> <p>Calcite_Aragonite - File: 3AB4.raw - Type: 2Th alone - Start: 22.410 ° - Operations: Import</p> | <p>Calcite_Aragonite - File: 81.raw - Type: 2Th alone - Start: 22.410 ° - End: Operations: Import</p> <p>Calcite_Aragonite - File: 82.raw - Type: 2Th alone - Start: 22.410 ° - End: Operations: Import</p> <p>Calcite_Aragonite - File: 83.raw - Type: 2Th alone - Start: 22.410 ° - End: Operations: Import</p> <p>Calcite_Aragonite - File: 4A3.raw - Type: 2Th alone - Start: 22.410 ° - End: Operations: Import</p> | <p>Calcite_Aragonite - File: 10A1.raw - Type: 2Th alone - Start: 22.410 ° - End: Operations: Import</p> <p>Calcite_Aragonite - File: 10A2.raw - Type: 2Th alone - Start: 22.410 ° - End: Operations: Import</p> <p>09-0466 (*) - Albite, ordered - NaAlSi<sub>3</sub>O<sub>8</sub> - Y: 13.28 % - d x by: 1. - WL: 1.54056</p> <p>36-0426 (*) - Dolomite - CaMg(CO<sub>3</sub>)<sub>2</sub> - Y: 51.67 % - d x by: 1. - WL: 1.54056</p> <p>46-1045 (*) - Quartz, syn - SiO<sub>2</sub> - Y: 4.15 % - d x by: 1. - WL: 1.54056</p> <p>71-1663 (C) - Calcite, magnesian - Mg<sub>0.1</sub>Ca<sub>0.9</sub>CO<sub>3</sub> - Y: 41.35 % - d x b</p> |
|---|--|---|